

Photometric Report

VDO Atomic Bold – Beam - 30 Deg Diffuser - Boost

MARTIN PROFESSIONAL R&D OPTICAL LABORATORY

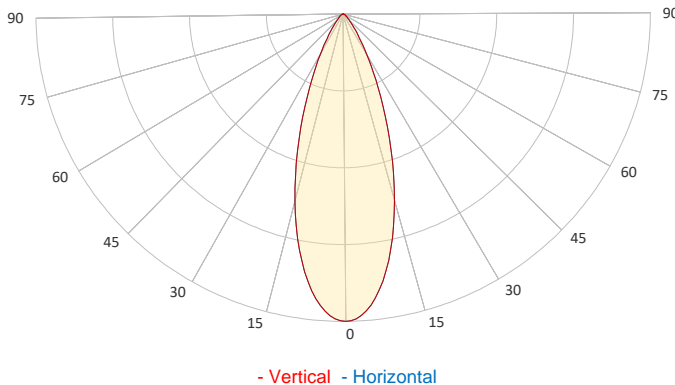
GENERAL SPECIFICATIONS

Total Fixture Output:	13000 lm
Light Engine Output:	14200 lm
Efficacy:	43 lm/W
Lens Option:	N/A
Beam Angle (50%):	36 °
Field Angle (10%):	67 °
Cut-off Angle (3%):	93 °
CRI:	83
CQS:	87
TM-30 Rf:	83
TM-30 Rg:	106
TLCI:	85
Color Temperature:	2,000-11,000 K



SAMPLE MEASUREMENT

POLAR PLOT

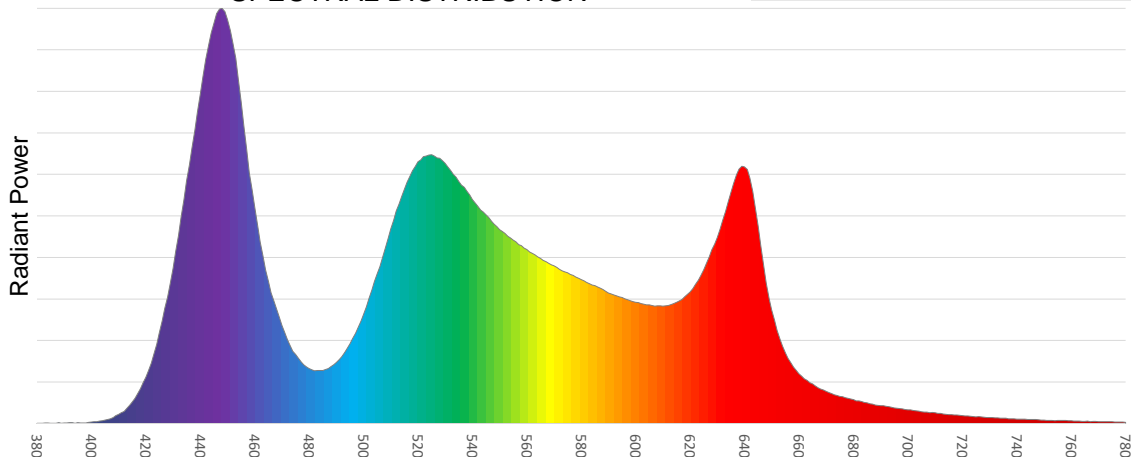


Catalog Number:	MAR-90357703
Measured Output:	12305 lm
Measured Peak:	25261 cd
Consumed Power:	300 W
Efficacy:	41.0 lm/W

Beam Angle (50%):	36.4 °
Field Angle (10%):	67 °
Cut-off Angle (3%):	93 °

Measurement Condition:	
Ambient Temperature:	25 ° +/- 5 ° C
AC Supply:	230V/50Hz
Fan Mode:	Regulated Fan Speed
Fixture Warm-up Time:	30 minutes

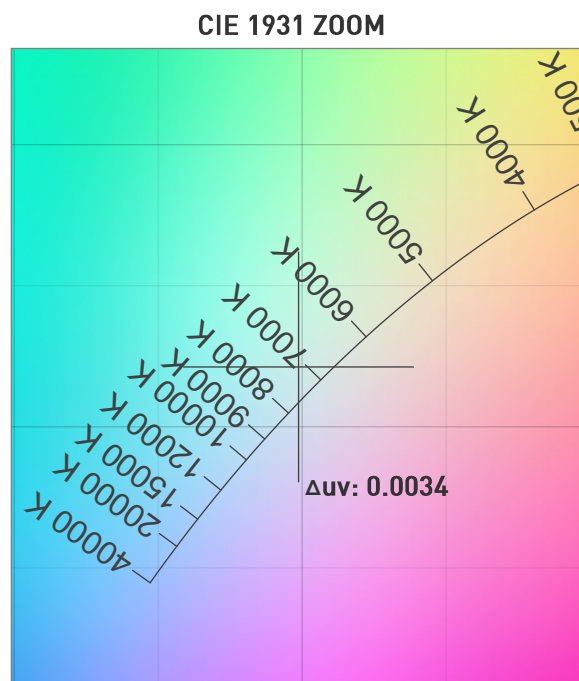
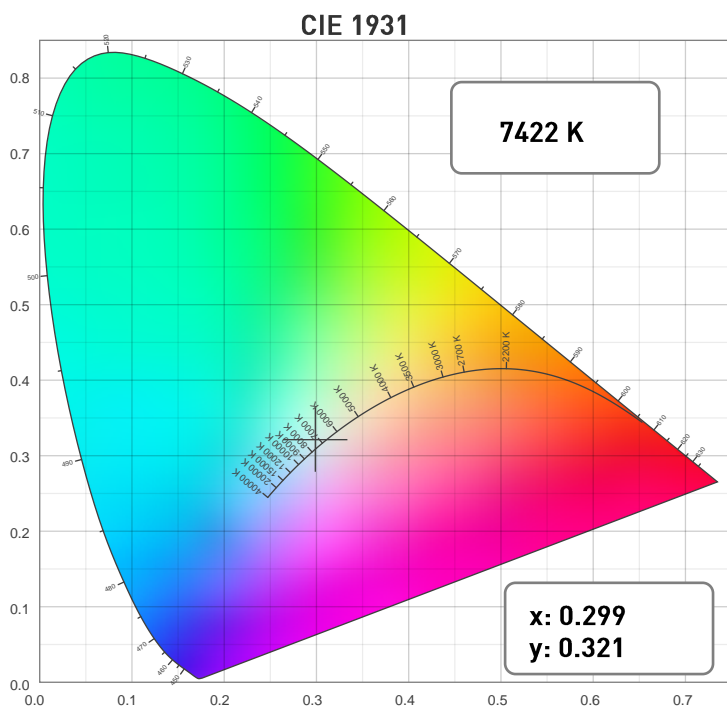
SPECTRAL DISTRIBUTION



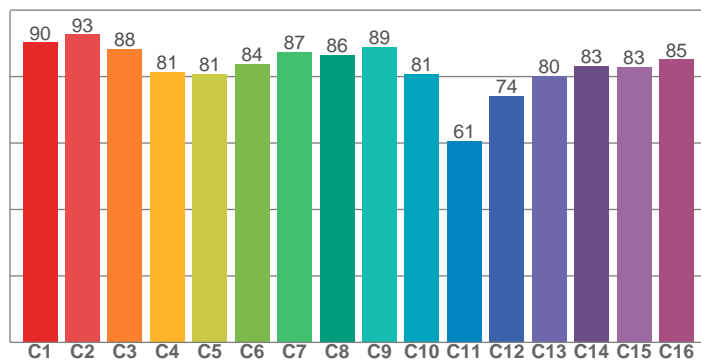
Photometric Report

VDO Atomic Bold – Beam - 30 Deg Diffuser - Boost

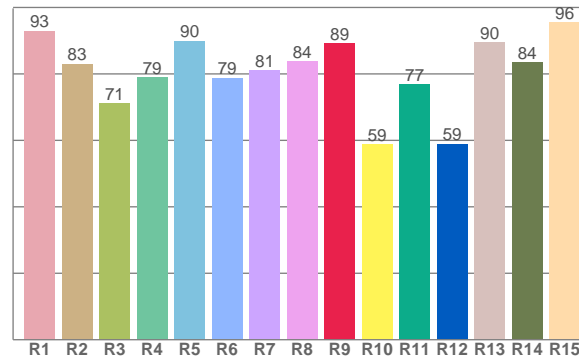
CHROMATICITY



TM30: 83.4



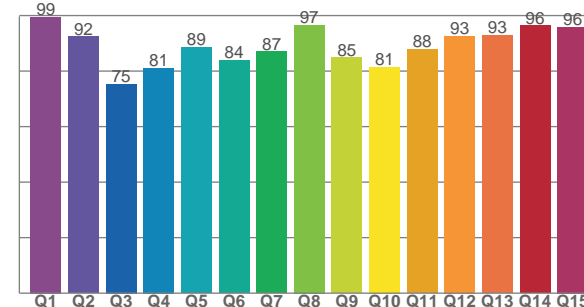
CRI: 82.5 (R1-R8)



COLOR PARAMETERS

Color Temperature	Color Rendering Index	Red Component	Color Fidelity	Color Gamut
CCT	CRI	CRI R9	TM30 Rf	TM30 Rg
7422 K	82.5	89.3	83.4	105.4

CQS: 87.2



Television Lighting Consistency Index	Color Quality Scale	Color Coordinate CIE 1931	Color Coordinate CIE 1931	Color Coordinate CIE 1964	Color Coordinate CIE 1964	Color Deviation from Black Body
TLCI	CQS	x	y	u	v	Δuv
85	87.2	0.299	0.321	0.191	0.308	0.0034

Photometric Report

VDO Atomic Bold – Beam - 30 Deg Diffuser - Boost

TM30

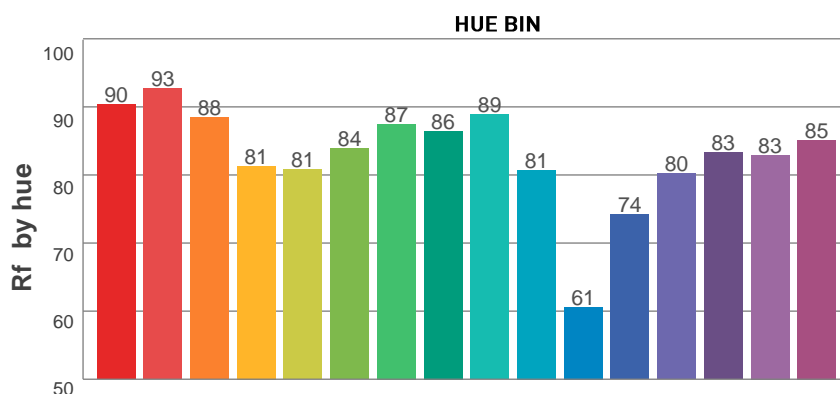
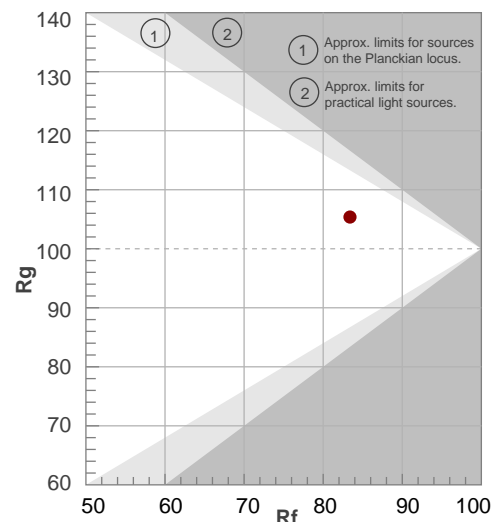
Rf 83.4

Fidelity index Rf

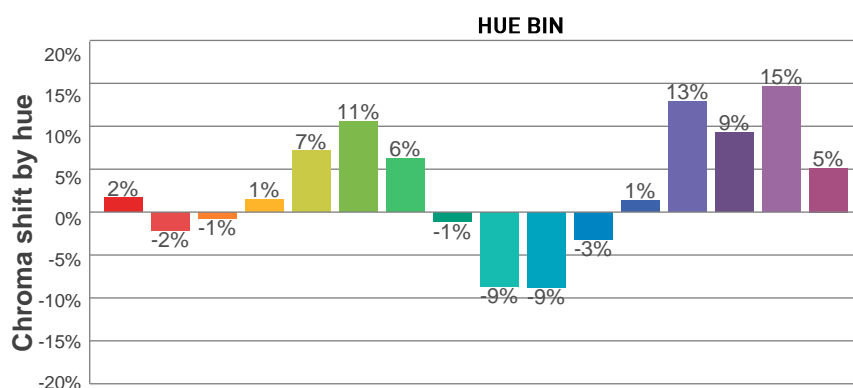
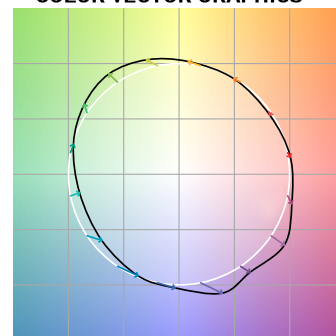
Rg 105.4

Gamut index Rg

Hue Bin	R _f	Graphic shifts (%)	
		Chroma	Hue
1	90	2%	-4%
2	93	-2%	-1%
3	88	-1%	7%
4	81	1%	11%
5	81	7%	9%
6	84	11%	2%
7	87	6%	-5%
8	86	-1%	-8%
9	89	-9%	-1%
10	81	-9%	11%
11	61	-3%	20%
12	74	1%	16%
13	80	13%	17%
14	83	9%	4%
15	83	15%	0%
16	85	5%	-6%



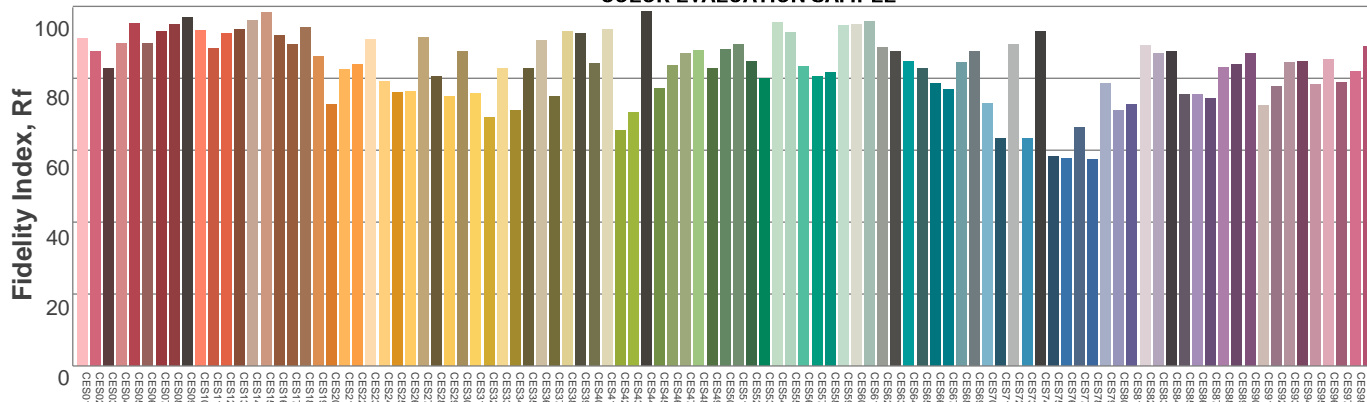
COLOR VECTOR GRAPHICS



COLOR DISTORTION GRAPHICS



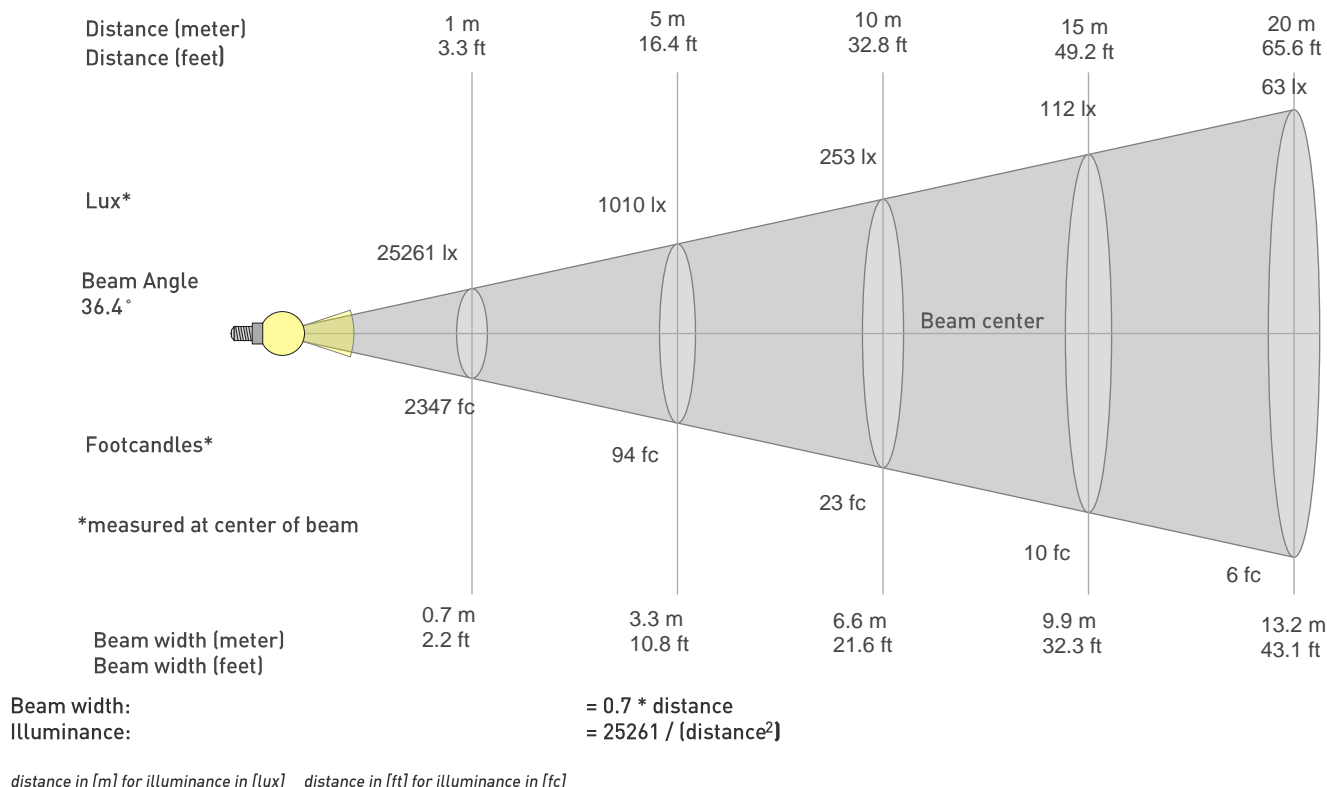
COLOR EVALUATION SAMPLE



Photometric Report

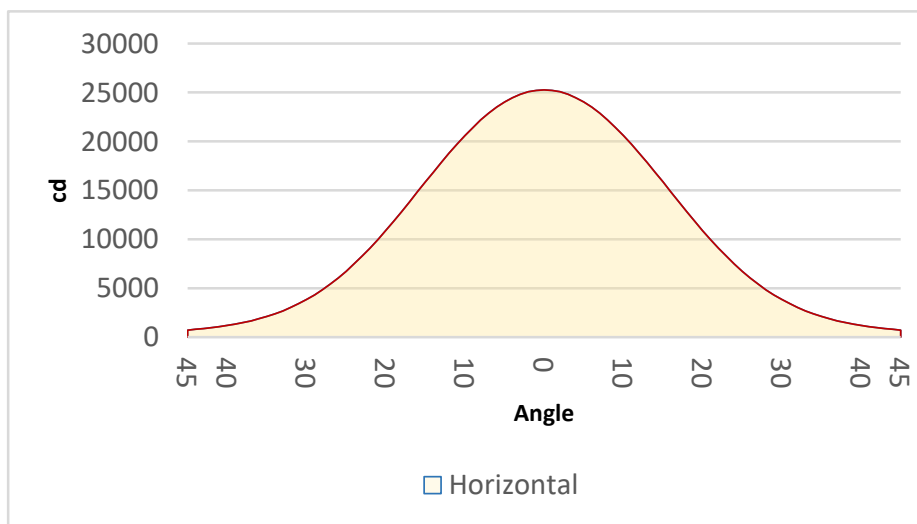
VDO Atomic Bold – Beam - 30 Deg Diffuser - Boost

BEAM DETAILS



BEAM ILLUMINANCE FROM 1-20M

1m	2m	3m	4m	5m	6m	7m	8m	9m	10m	11m	12m	13m	14m	15m	16m	17m	18m	19m	20m
3.3ft	6.6ft	9.8ft	13.1ft	16.4ft	19.7ft	23ft	26.2ft	29.5ft	32.8ft	36.1ft	39.4ft	42.7ft	45.9ft	49.2ft	52.5ft	55.8ft	59.1ft	62.3ft	65.6ft
25261lx	6315lx	2807lx	1579lx	1010lx	702lx	516lx	395lx	312lx	253lx	209lx	175lx	149lx	129lx	112lx	99lx	87lx	78lx	70lx	63lx
2346.8fc	586.7fc	260.8fc	146.7fc	93.9fc	65.2fc	47.9fc	36.7fc	29fc	23.5fc	19.4fc	16.3fc	13.9fc	12fc	10.4fc	9.2fc	8.1fc	7.2fc	6.5fc	5.9fc



BEAM ANGLE 50%	FIELD ANGLE 10%	CUTOFF ANGLE 3%
36.4°	67°	93°